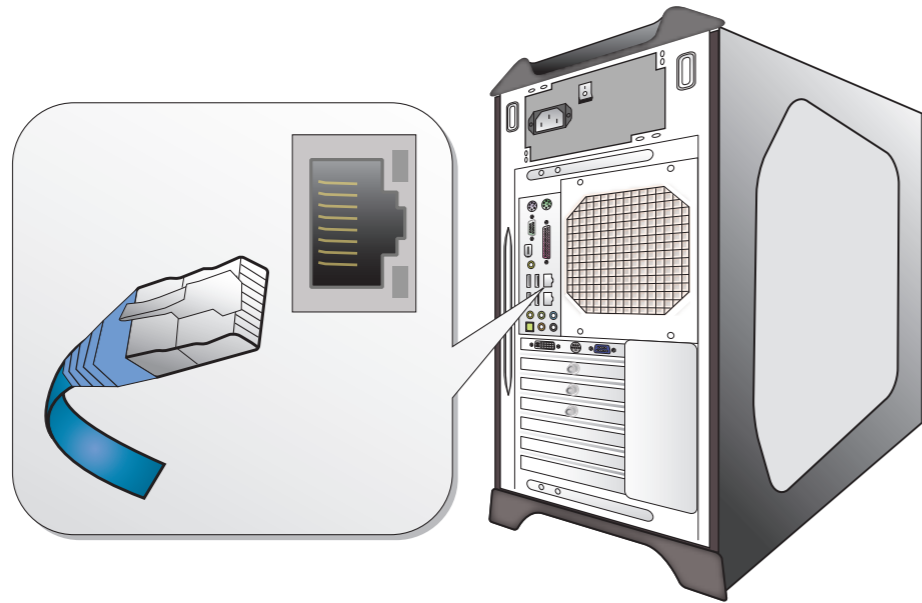


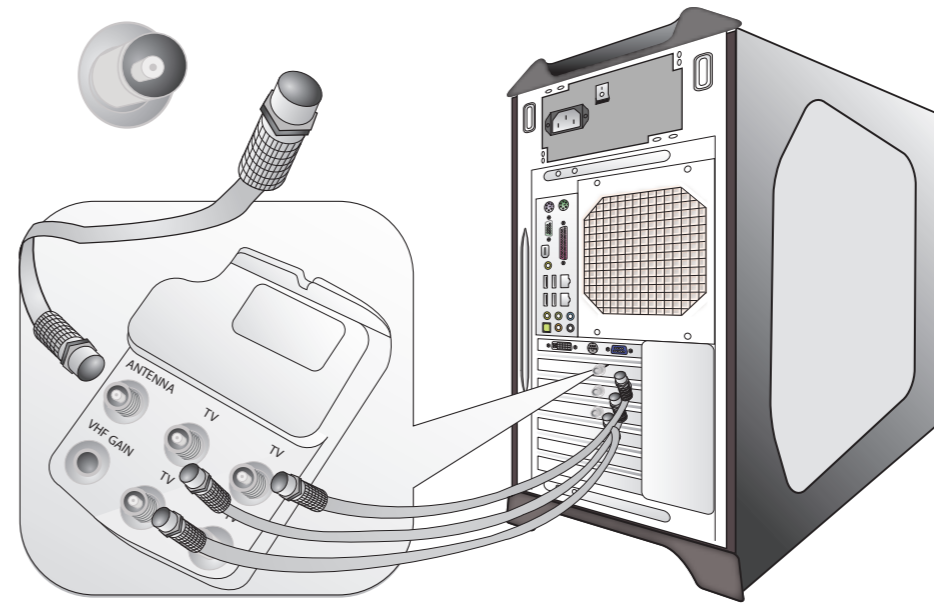
ClickView[®] Setting up your 24-7

1. Connect ClickView 24-7 to the network ▶



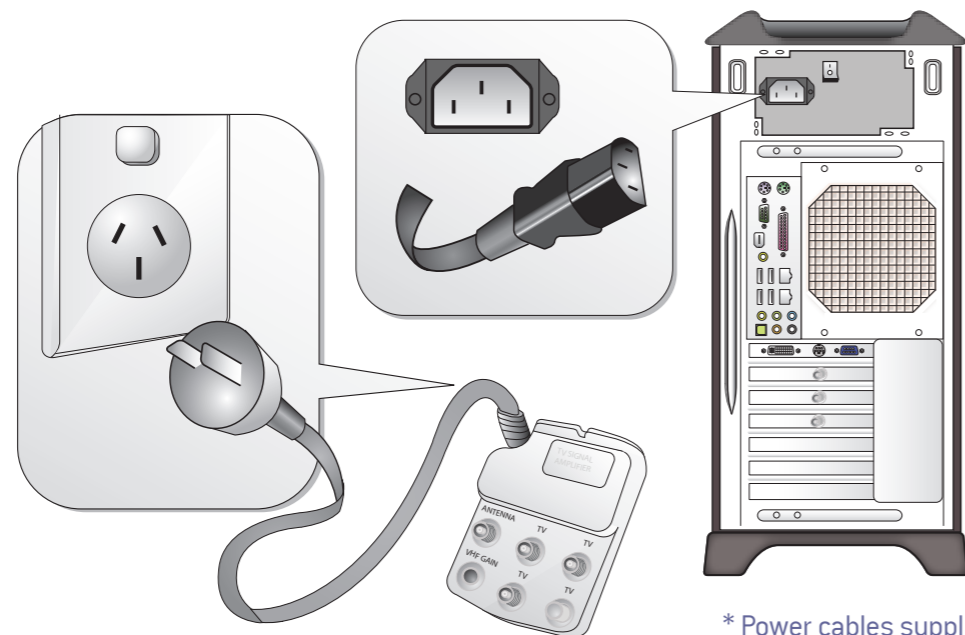
* Network cable supplied

2. Connect antenna cables ▶



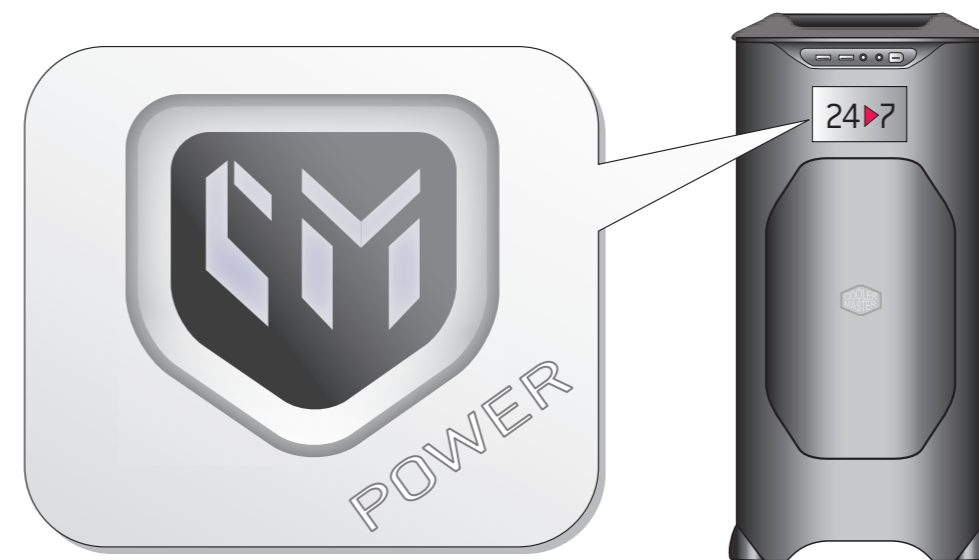
* Antenna splitter/amplifier and 3 coaxial cables supplied

3. Connect power cables ▶



* Power cables supplied

4. Power on ClickView 24-7 ▶



* Please wait 2-3 minutes for Windows to load